

SUMPOO₹NA

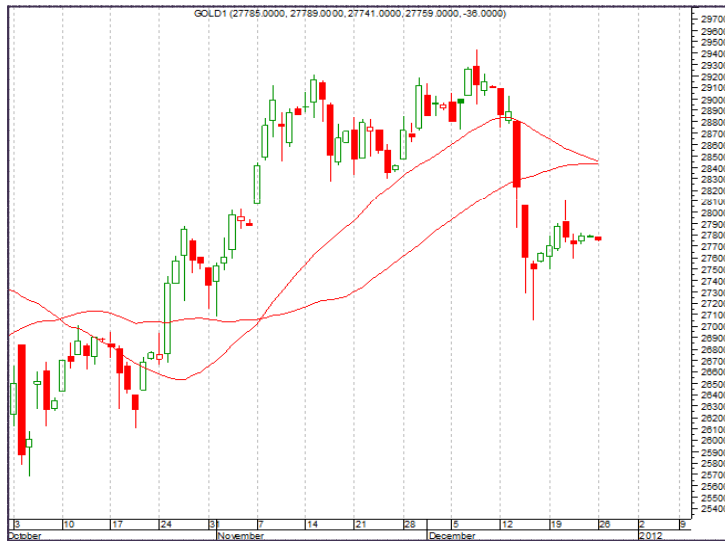
Daily Market Report
Commodities

December 27, 2011

Commodity Technical's: Bullion

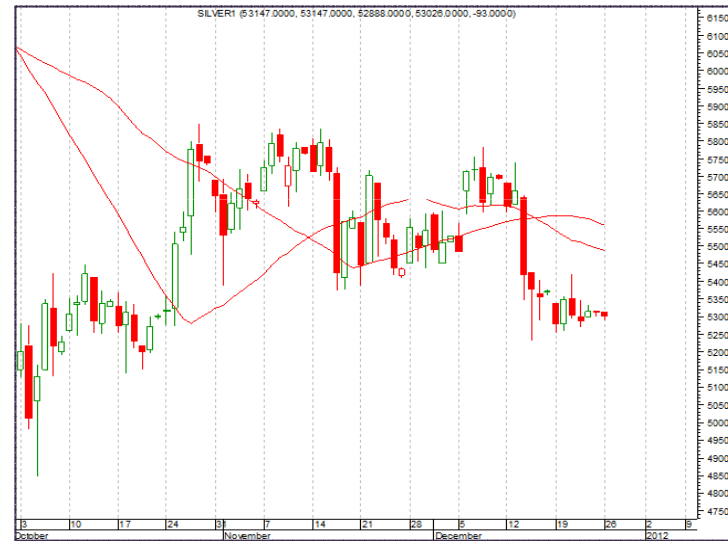
SUMPOORNA

Gold (2ND Feb, 2012)



**Sell gold around 27,750; SL; 27,820
Target 27670**

Silver (5th Mar, 2012)

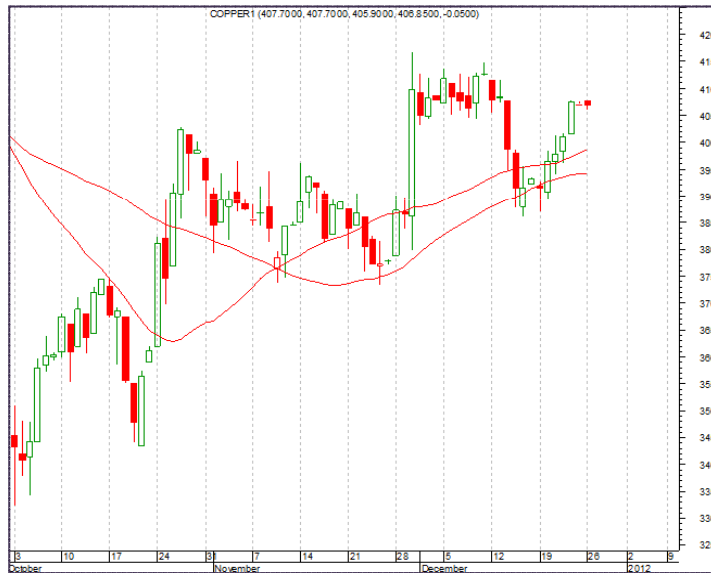


**Sell Silver around 53,100; SL 53,450
Target 52,700**

Commodity Technical's: Metals

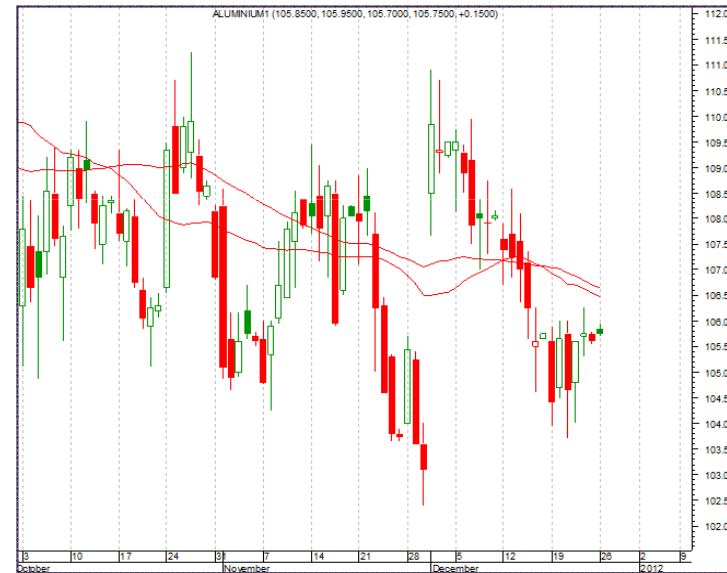
SUMPOORNA

Copper (29th Feb, 2012)



**Buy Copper around 402; SL: 397;
Target: 410**

Aluminum (30th Dec, 2011)

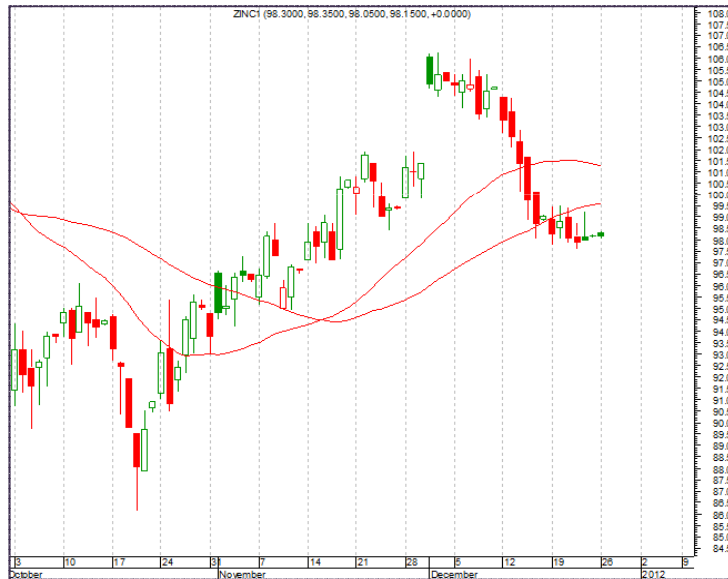


**Buy Aluminum around 104.70;
SL: 103.5; Target: 106.5**

Commodity Technical's: Metals

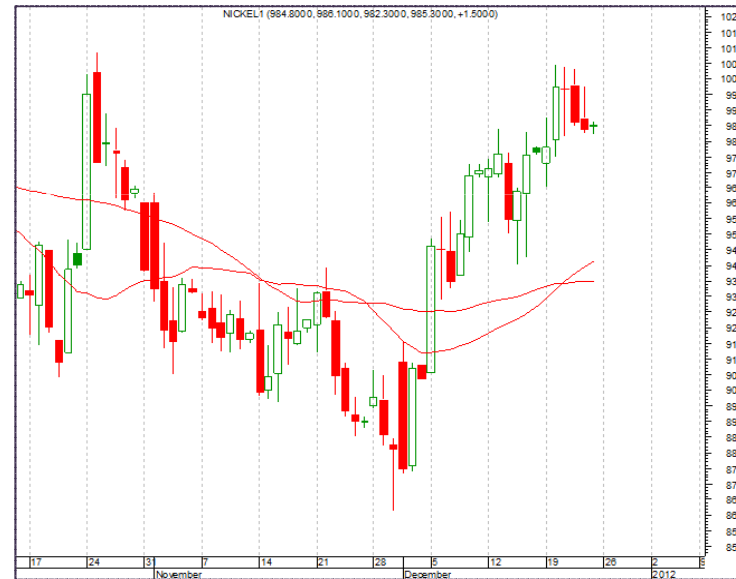
SUMPOORNA

Zinc (30th Dec, 2011)



**Buy Zinc around 97.30; SL: 96.40;
Target: 99.20**

Nickel (30th Dec, 2011)

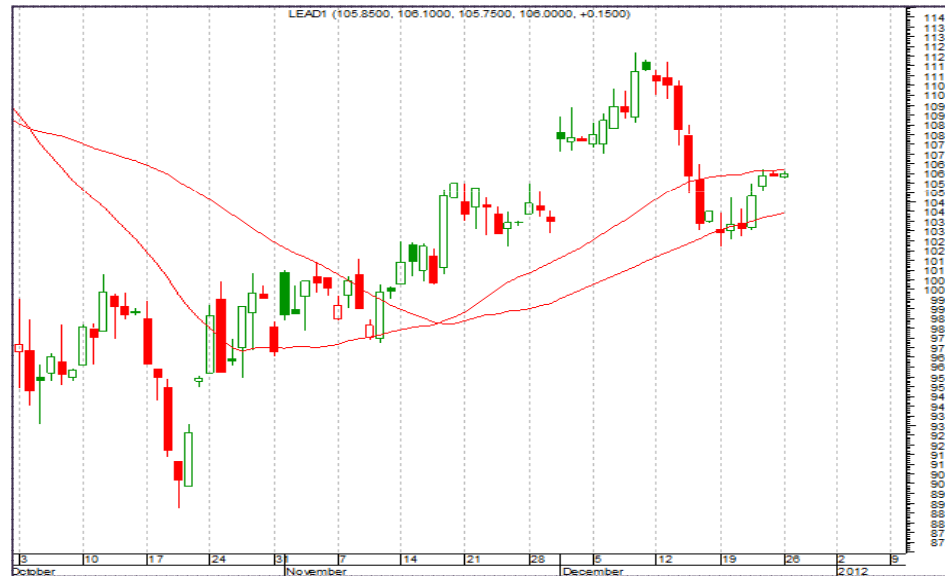


**Buy Nickel around 975; SL; 965:
Target ;1015**

Commodity Technical's: Metals

SUMPOO₹NA

Lead (30th Dec, 2011)

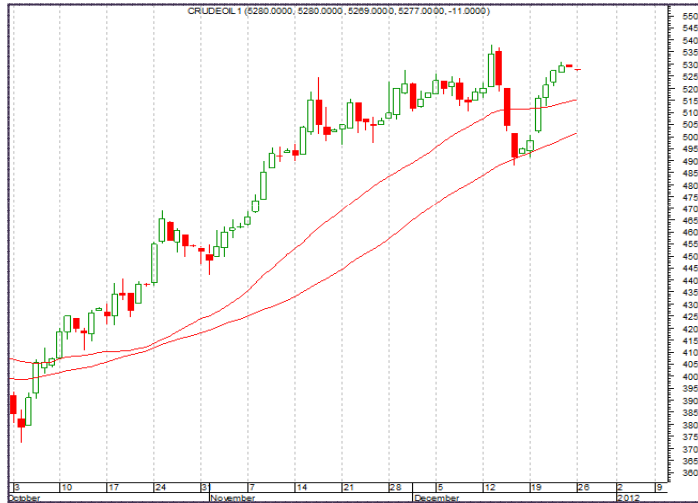


Buy lead around 104; SL: 102.90,
Target 106

Commodity Technical's : Energy

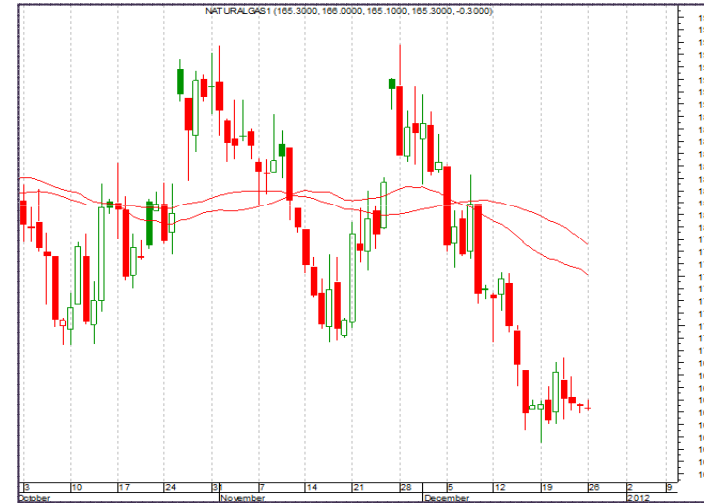
SUMPOORNA

Crudeoil (19th Jan, 2011)



Buy crudeoil around 5250 ; SL: 5210, Target ; 5300

Natural gas (27th Dec, 2011)



BUY Natural gas around 164 ; SL: 162, Target: 168

Disclaimer

SUMPOORNA

This document is solely for the personal information of the recipient, and must not be singularly used as the basis of any investment decision. Nothing in this document should be construed as investment or financial advice. Each recipient of this document should make such investigations as they deem necessary to arrive at an independent evaluation of an investment in the security/ instrument referred to in this document (including the merits and risks involved), and should consult their own advisors to determine the merits and risks of such an investment.

Sumpoorna Portfolio Limited, its affiliates, directors, its proprietary trading and investment businesses (collectively referred to as 'Sumpoorna') may, from time to time, make investment decisions that are inconsistent with or contradictory to the recommendations expressed herein. The views contained in this document are those of the analyst, and the company may or may not subscribe to all the views expressed within. Reports based on technical and derivative analysis center on studying charts of a investment vehicle's price movement, outstanding positions and trading volume, as opposed to focusing on a instrument's fundamentals and, as such, may not match with a report on a company's/ investment vehicles fundamentals.

The information in this document has been printed on the basis of publicly available information, internal data and other reliable sources believed to be true, but we do not represent that it is accurate or complete and it should not be relied on as such, as this document is for general guidance only. Sumpoorna or any of its affiliates/ group companies shall not be in any way responsible for any loss or damage that may arise to any person from any inadvertent error in the information contained in this report. Sumpoorna has not independently

verified all the information contained within this document. Accordingly, we cannot testify, nor make any representation or warranty, express or implied, to the accuracy, contents or data contained within this document. While Sumpoorna endeavours to update on a reasonable basis the information discussed in this material, there may be regulatory, compliance, or other reasons that prevent us from doing so.

This document is being supplied to you solely for your information, and its contents, information or data may not be reproduced, redistributed or passed on, directly or indirectly.

Sumpoorna and its affiliates may seek to provide or have engaged in providing corporate finance, investment banking or other advisory services in a merger or specific transaction to the companies/ instruments referred to in this report, as on the date of this report or in the past.

Neither Sumpoorna, nor its directors, employees or affiliates shall be liable for any loss or damage that may arise from or in connection with the use of this information.

Note: Please contact Sumpoorna for more information on investment decisions. Also, please refer to the latest update on respective investment instruments for the disclosure status in respect of those particular investment instruments. Sumpoorna and its affiliates and clients may have investment positions in the investment vehicles recommended in this report.

Thank You.

SUMPOORNA

Corporate Office:

Address: C-56 A/ 13, 6th Floor,
Sector – 62, Phase III
Noida, Uttar Pradesh – 201301
Phone: +91 120 4505200
Fax: +91 120 4505234

Regional Office:

Address: 227, Linkway Estate,
New Link Road, Above Green Hotel,
Near Inorbit Mall, Malad (West)
Mumbai, Maharashtra – 400064
Phone: +91 22 42087070

url:

Capital Markets: www.sumpoornaonline.com
Insurance Broking: www.easypolicy.com

For further information please contact:

Sunil Koul
Sumpoorna Research
sunil.koul@sumpoorna.com